



EMPOWERING OUR WORLD
WITH CLEAN ENERGY

Q Kseng solar

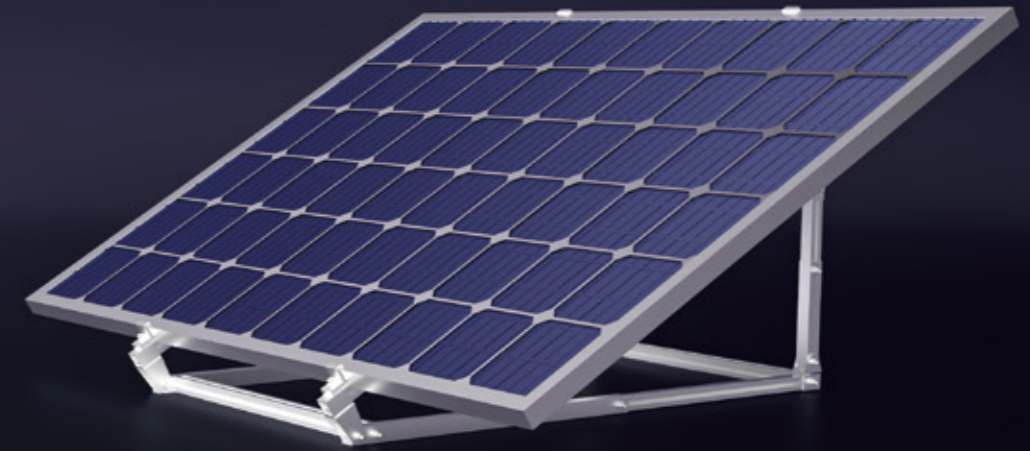


Xiamen Kseng Metal Tech. Co, Ltd

Email: info@xmkseng.com | **Web:** www.xmkseng.com | **Tel:** +86 0592-5777971 / +86 0592-5795673

Factory Add: No.1021-6, Xiangbei Road, Maxiang Street, Xiangan Dist., Xiamen, Fujian, China.

Office Add: 6-7F, Huixin Wealth Centre, No. 891, Fanghu North 2nd Rd., Huli Dist., Xiamen, Fujian, China.



Easy Solar Bracket

Kseng easy solar bracket, a highly pre-assembled mounting structure for achieving our home energy independence. Simply use it to combined with solar panel and micro inverter, which is designed for multiple scenarios or only affix to balcony. Tilt angle can be adjusted according to different installation environments and requirements to obtain the maximum power generation.

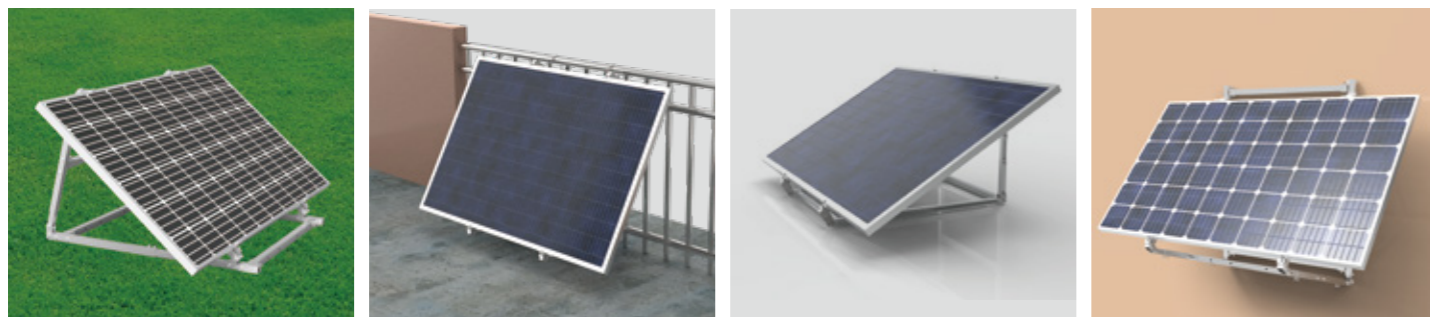
Advantages

- Completely pre-assembled, simply unfolded at site for installation.
- Highly anti-corrosion 6005-T5 aluminum alloy and robust 304 stainless steel.
- Adjustable angle manually to adjust the PV module angle for more energy generation.

Universal Easy Solar Bracket

- Adapt to multiple scenarios: garden, balcony, railing, wall, etc.
- Modular design with plug and play connection, quick and easy installation.
- Adjustable angle manually to adjust the PV module angle for more energy generation.

Multiple scenarios



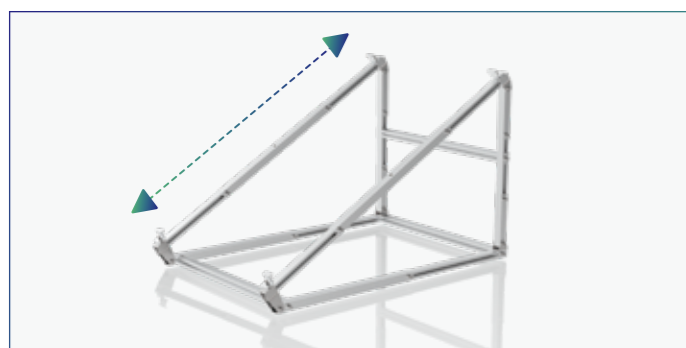
Garden

Balcony

Flat roof

Wall

▼ Adjustable length



▼ Adjustable angle



Parameters

Material: AL6005-T5, SUS304

Gross weight per bracket (kg): ≈ 8

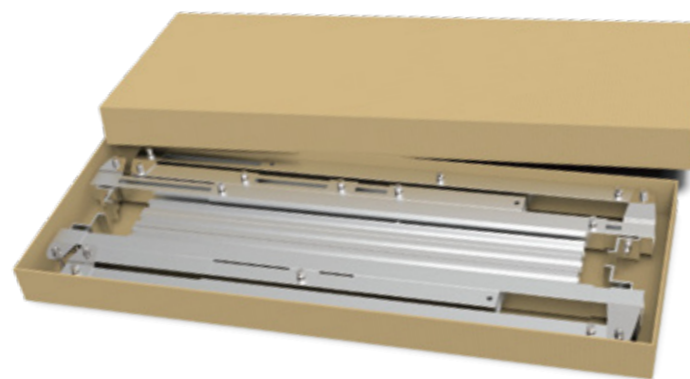
Length of solar module (mm): ≤ 2200

Width of solar module (mm): $751 \leq A \leq 1313$ mm

Thickness of solar module (mm) :30-50

Adjustable angle range: 15-50°

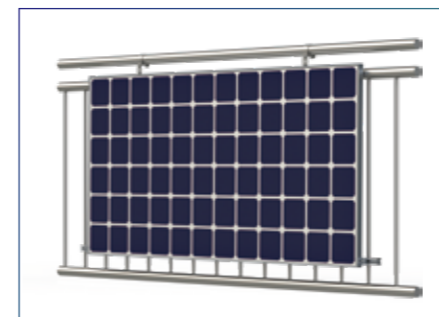
Package



Balcony Easy Solar Bracket

- Flexible fixing method, can be placed on the balcony with railing or wall .
- Highly anti-corrosion 6005-T5 aluminum alloy and robust 304 stainless steel.
- Completely pre-assembled, simply unfolded and secured to the balcony for installation.

Application scenarios



Balcony with railings



Balcony with railings (15-30°)



Balcony with walls

Parameters

Material: AL6005-T5, AL5052, SUS304

Applicable module: Framed

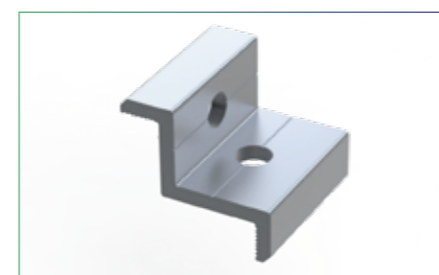
Adjustable tilt: 15-30°

Module orientation: Landscape

Thickness of module: 30&35mm

Warranty: 10 years

Components



30&35mm Clamp



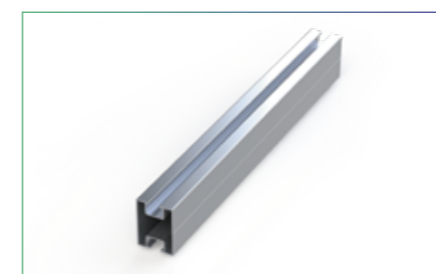
Hook



Bottom fastener



Adjustable leg



Beam



L connector